

KilRoid®

Disposable haemorrhoid suction ligator

KilRoid[™] is a disposable haemorrhoid suction ligator always ready to use. No cleaning or disinfection is needed. The ligator is operated single-handedly – the surgeon can control both the proctoscope and the ligator without any assistance. This means that KilRoid is both time-saving and cost-effective (1, 2).

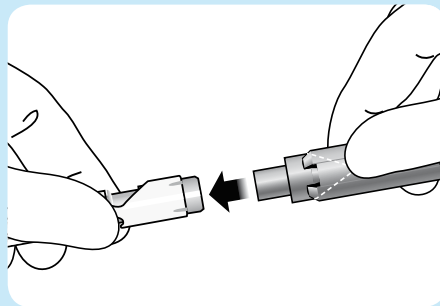
When better visualisation is needed, KilRoid[™], can be used together with a videoendoscopic proctoscope as an inexpensive alternative to endoscopic band ligation (3)

How to use KilRoid[®]

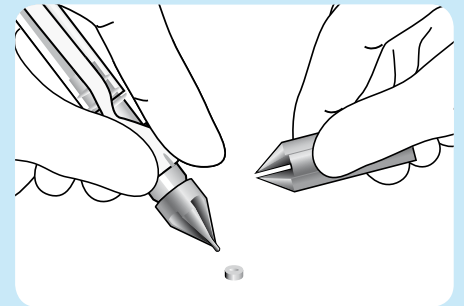
Loading



Before ligation is initiated KilRoid[®] must be loaded with a silicone rubber band. Loading is easily accomplished using the unique loading device.



1. Insert the loading cone into the suction end of the KilRoid[®] instrument.
Note: Make sure that the loading cone and the suction end are firmly together leaving no space between.

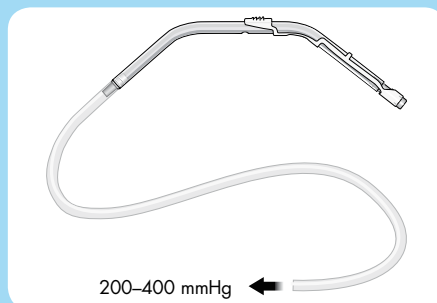


2. Place a silicone rubber band on the tip of the loading cone.

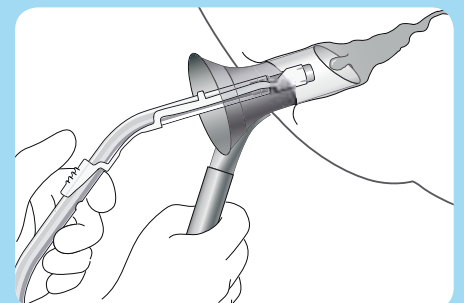
Operation



When loaded, KilRoid is ready to use. Since KilRoid is operated single-handedly, the surgeon carries out ligation alone, using one hand for the proctoscope and one hand for the ligator. No assistance is necessary.



1. Connect the KilRoid instrument to the suction source.

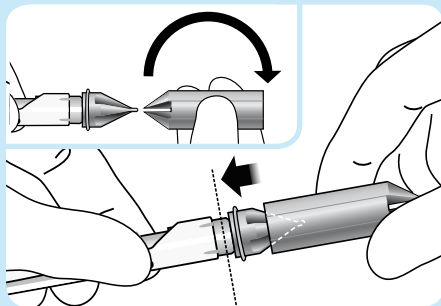


2. Locate the haemorrhoid through a proctoscope. The instrument is passed through the proctoscope until the haemorrhoid is enclosed in the lumen of the suction end.

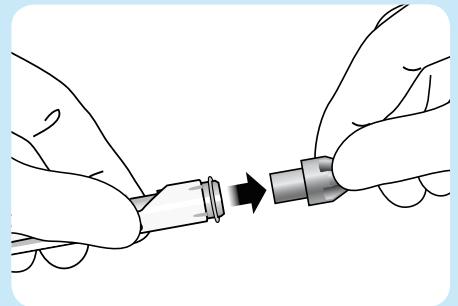
- **Convenient** – clean instrument always ready to use
- **Time-saving** – no cleaning and disinfecting, more patients can be treated
- **No assistance required** – single-handed operation, better visibility and increased precision
- **Hygienic** – protects the patient, operator and nursing staff from infections (2), product discarded after use eliminates the cross-infection risk
- **Unique loading device** – easy loading of rubber bands
- **Latex-free rubber bands** – reduced risk of allergic reactions



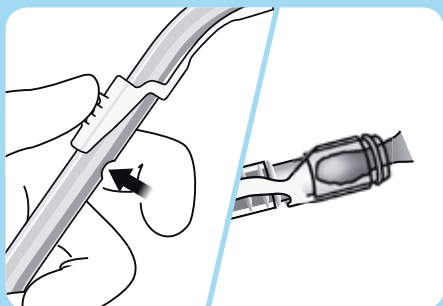
3. Place the expander cone on the tip of loading cone and push the two together – this will expand the silicone rubber band and slide it on to the base of the loading cone.



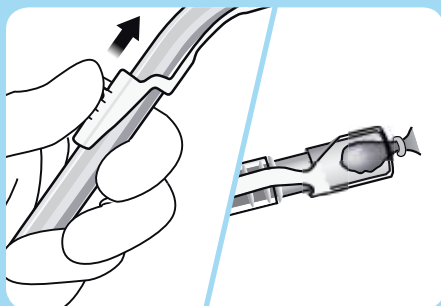
4. Withdraw the expander cone from the loading cone, rotate the expander cone through 180°, presenting the open end of the expander cone to the loading cone. Push the silicone rubber band on to the suction end of the instrument.



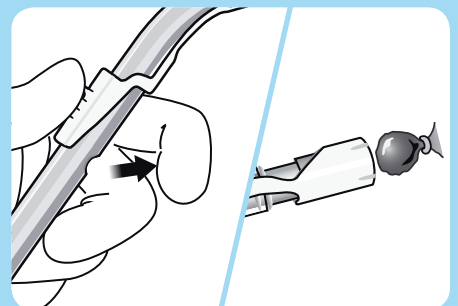
5. Remove the loading cone – the silicone rubber band is now mounted on the suction end and the instrument is ready to use.



3. The vacuum control hole is occluded (with a finger) and the haemorrhoid is aspirated into the instrument.



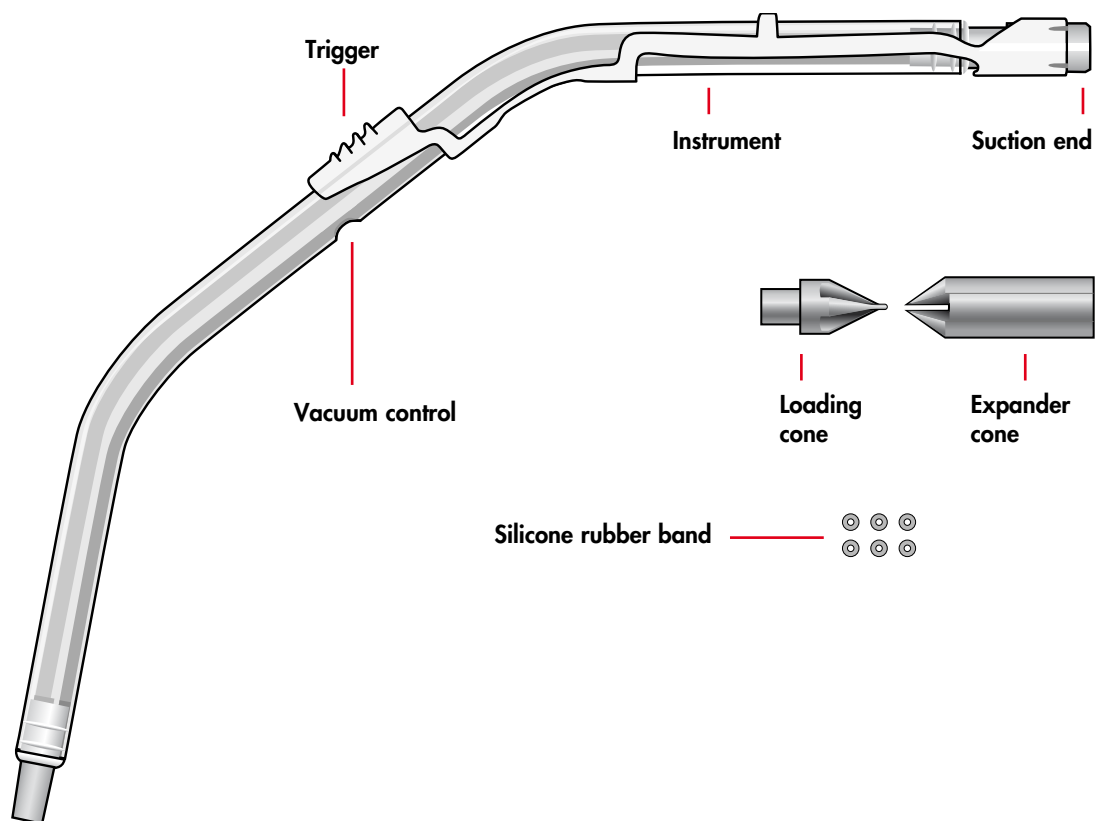
4. The trigger is operated by pushing the trigger forward with the thumb. This fires the band from the instrument, occluding the stem of the haemorrhoid.



5. The instrument can be withdrawn after releasing the vacuum control hole.

If more haemorrhoids in the same patient are to be treated, KilROID can be recharged with another silicone rubber band. KilROID is disposed of when treatment of the patient is completed.

KilRoid®



Description

Material

PETG (instrument), PVC (tubing), polyamid (trigger), polypropylene (loading cone), ABS (expander cone, connector), silicone (rubber bands).

Single use

All components are intended for single use only.
Do not use if the package is open or damaged.

Product range – KilRoid®

Ref No

67401 1x30 KilRoid® with 2 m tubing
67400 1x30 KilRoid® without tubing



Latex free

References

1. Williams, I.M. & Rees, B.I.: Gastroenterology Today, 1992;2:1.
2. De Falco, R et al.: Riv It Colonproct, 1995;14:97-102.
3. Dickey W, Garrett D, Am J Gastroenterol, 2000;95:1714-16.

